

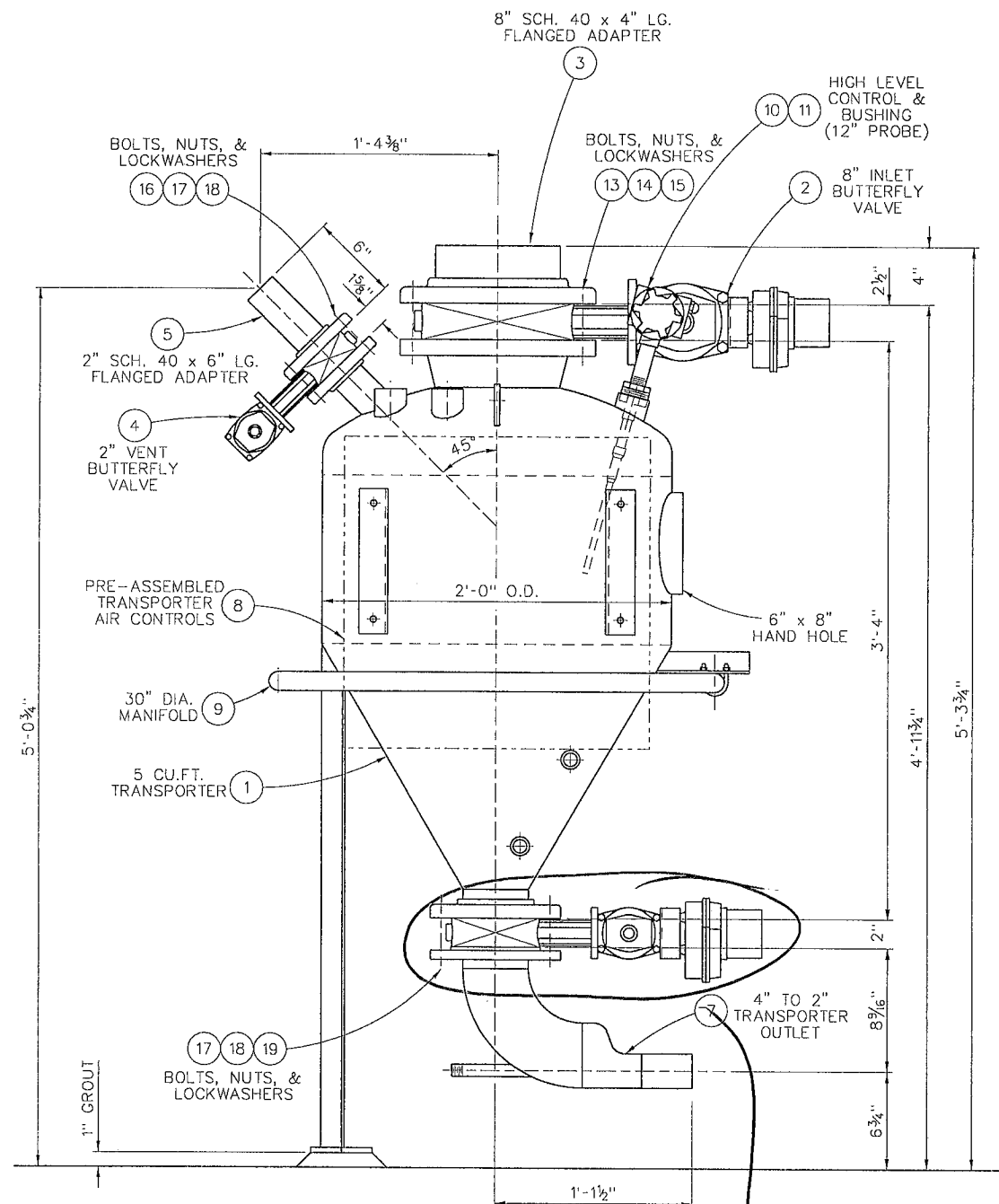
AERATION OF SILO HOPPER
 FROM SHEET 4
 SEE PLAN VIEW FOR TRUE ORIENTATION

PRELIMINARY
 DO NOT USE FOR
 FABRICATION OR INSTALLATION

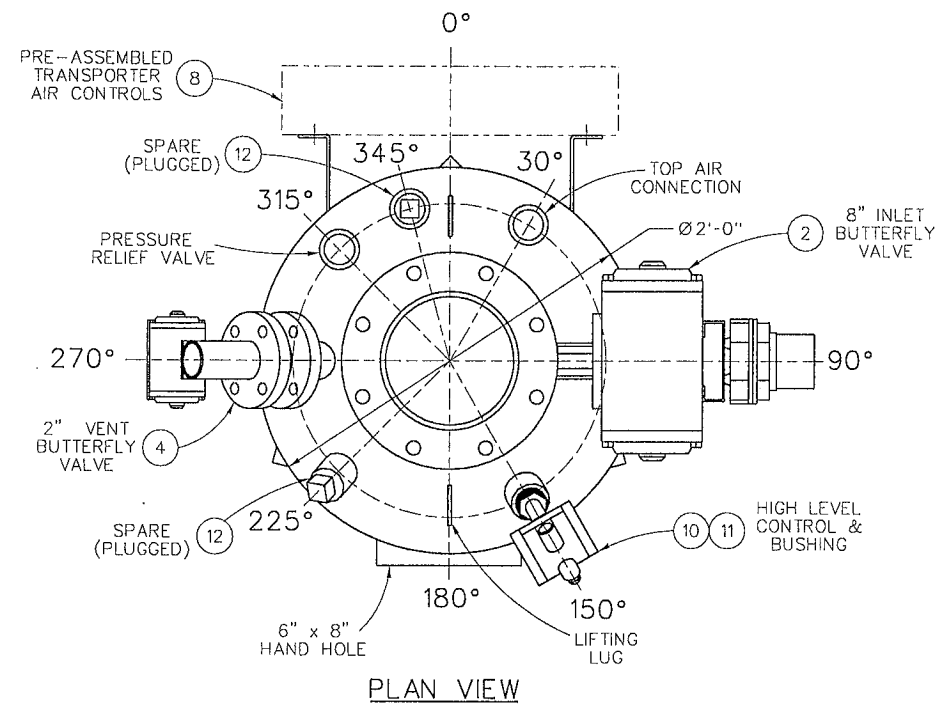
* INDICATES FIELD VERIFY AND CUT TO LENGTH

MECHANICAL INSTALLATION ARRANGEMENTS		FAB TECH		CASPER, WYOMING		CATALOG NO. 46107	
07APR09	RELEASE FOR CONSTRUCTION	JMK	JRB	DRAWN BY B. OUCHARME	DATE 16 JUN 08	APPROVED BY	JRB
REV	DATE	REVISION NOTE	DRAWN	DESIGN	DESIGN BY J. BADDIN	SCALE 1/2" = 1'-0"	DRAWING NO. 9005A-2
							SHEET 5 OF 5

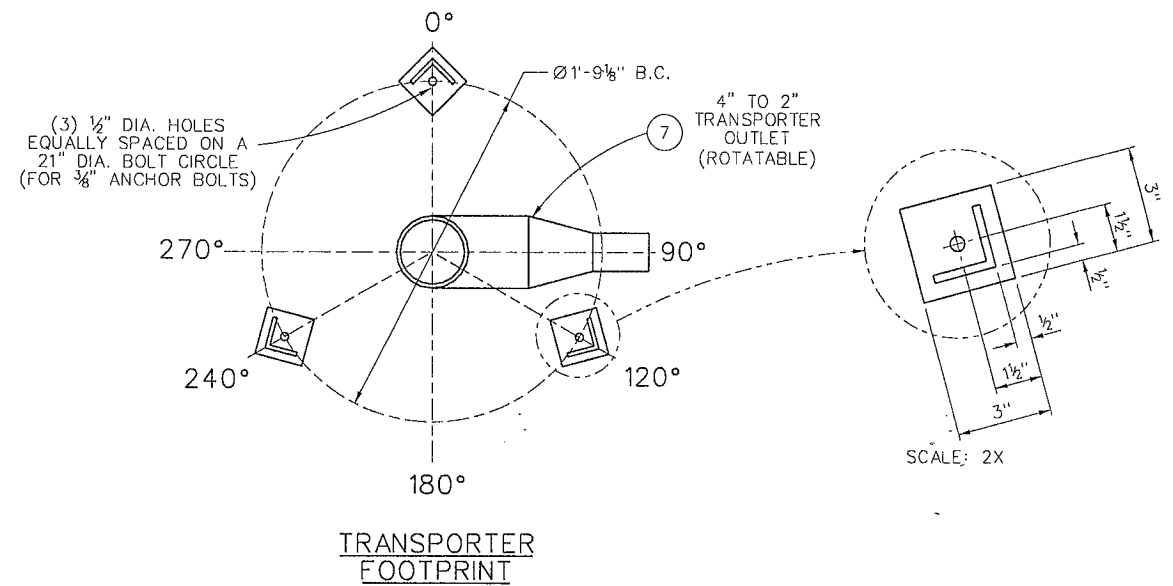
APR 08 2009 ORIGINAL



ELEVATION VIEW
SEE PLAN VIEW FOR
TRUE ORIENTATION



PLAN VIEW



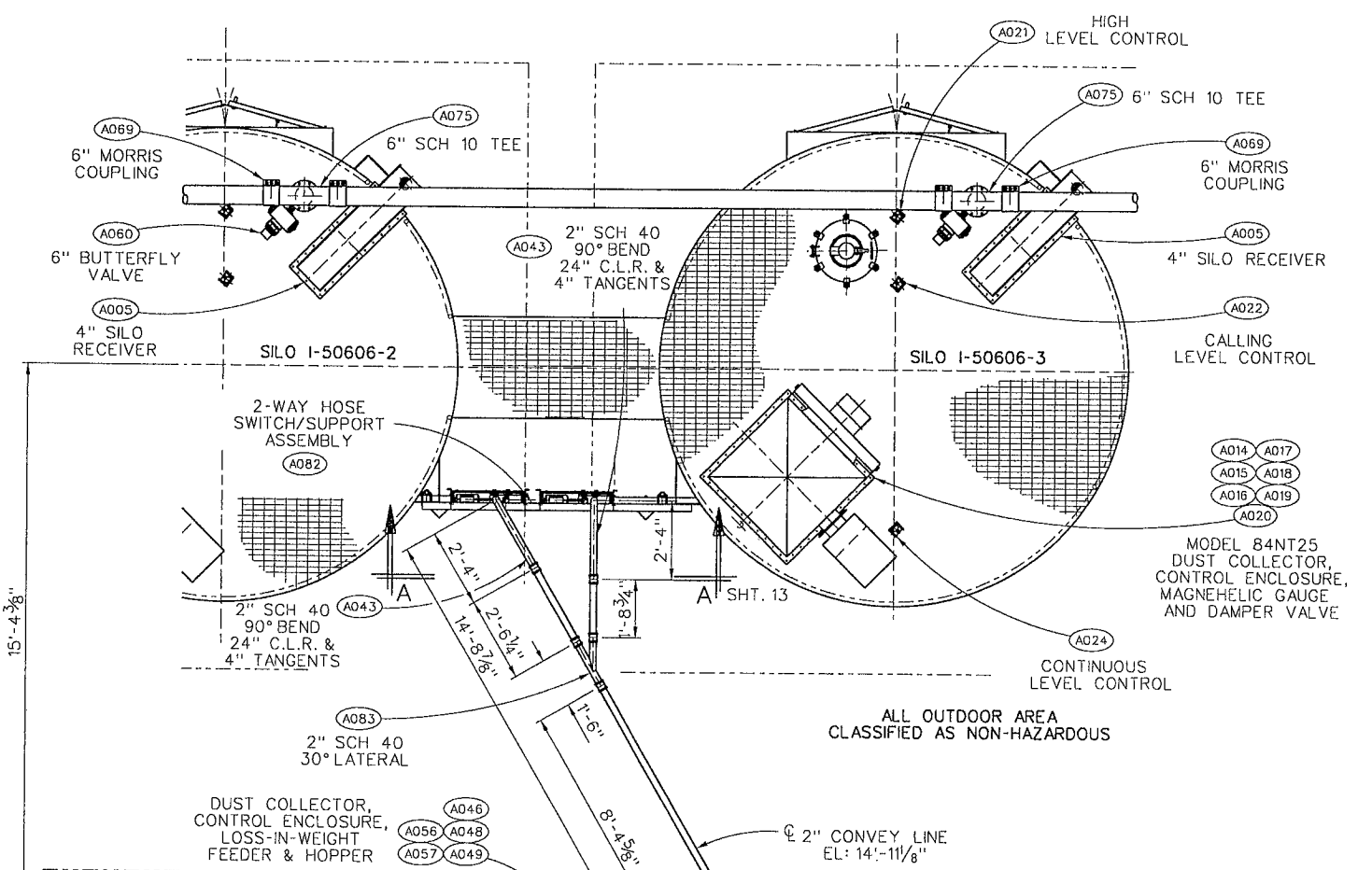
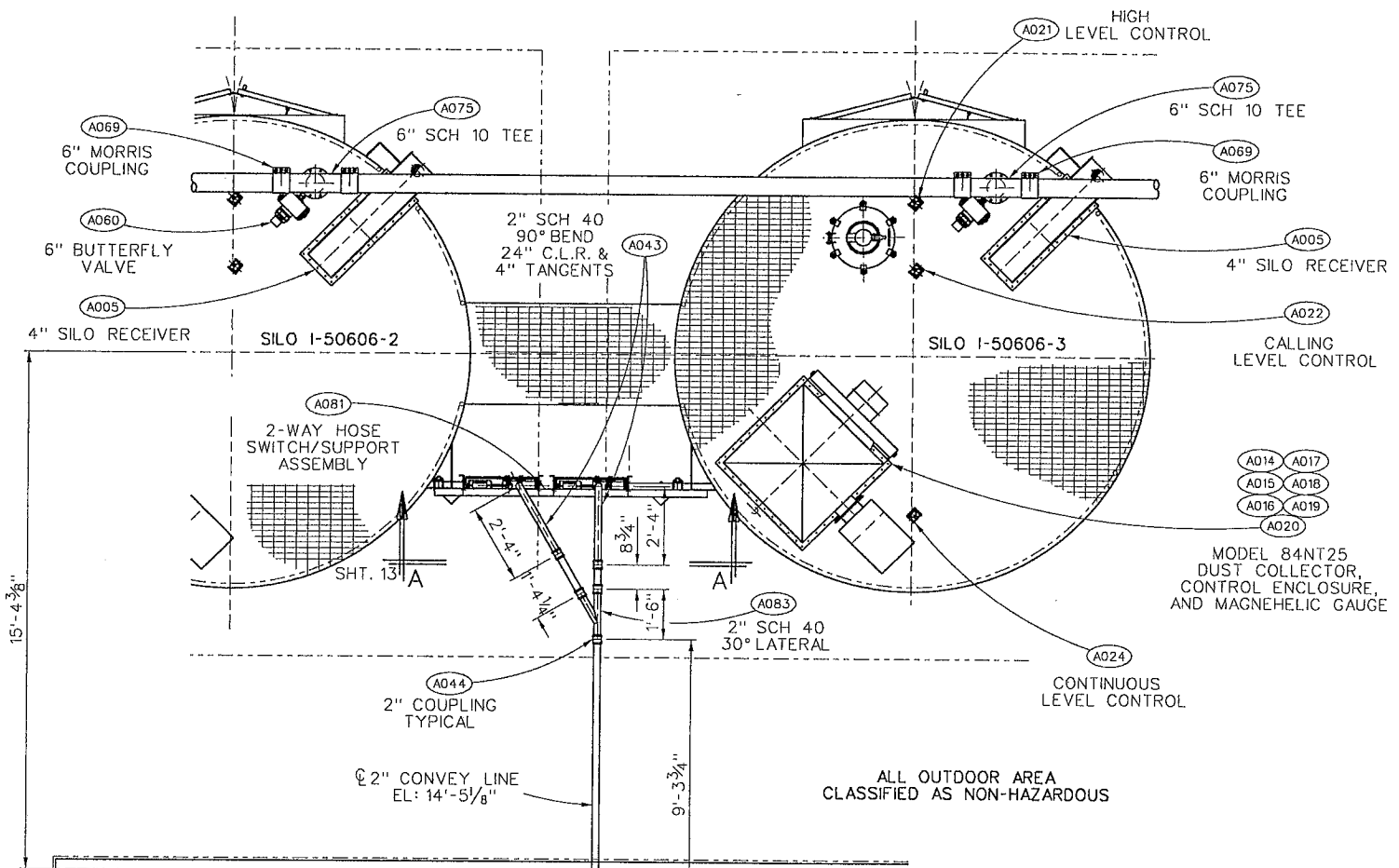
TRANSPORTER
FOOTPRINT

NOT REQ'D
UNLESS TWO VESSELS
OR MORE INTO
COMMON LINE

NOTES:
- ORIENTATION OF OUTLET TO BE SET IN FIELD

11MAR08		RELEASED FOR CONSTRUCTION	JRB	DRAWN BY J. KORFHAGE	DATE 11MAR08	APPROVED BY	5 Cu. Ft. - 24" O.D. TRANSPORTER ASSEMBLY SINGLE VENT VALVE	 Lino Lake, MN, USA www.noltec.com (551) 750-2500 4001
REV	DATE	REVISION NOTE	DRAWN	DESIGN	DESIGN BY	SCALE 2" = 1'-0"	DRAWING NO. 1979A-14	

ORIGINAL MAR 1 2008



WATER & NAOH
 FILTERS FT07-322
 CLASS 1, DIV 2 AREA
 IN STRCTURE ONLY
 CONVEY LINE EL: 14'-5 1/8"

WATER & NAOH
 FILTERS FT07-322
 CLASS 1, DIV 2 AREA
 IN STRCTURE ONLY
 CONVEY LINE EL: 14'-11 1/8"

PRELIMINARY
 DO NOT USE FOR
 FABRICATION OR INSTALLATION

MECHINCAL INSTALLATION ARRANGEMENTS		FABTECH		CASPER, WYOMING		CATALOG NO. 46107	
07APR09 RELEASE FOR CONSTRUCTION		JMK	JRB	DATE 16JUN08	APPROVED BY JRB	DRAWING NO. 9005A-2	
REV	DATE	REVISION NOTE	DRAWN	DESIGN	DESIGN BY	SCALE 3/8" = 1'-0"	SHT 3 OF 3

APR 08 2009 ORIGINAL